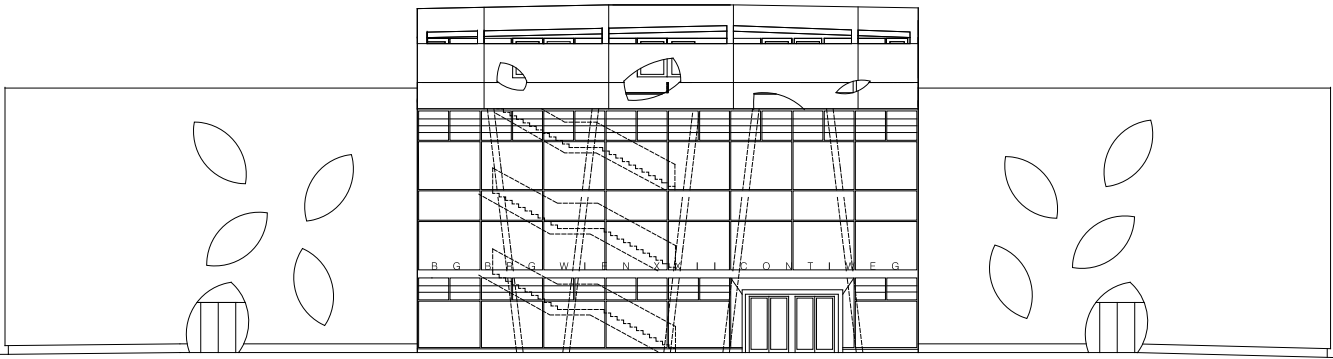


Secondary school - AHS Contiweg

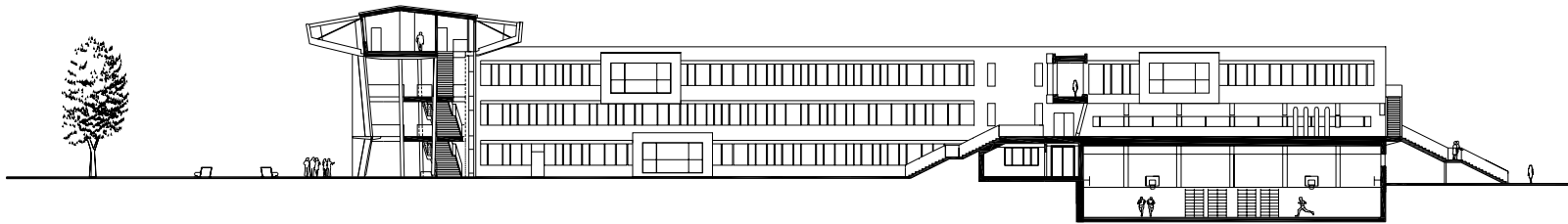
Architect: Atelier Heiss Architekten
Structural Engineering: Brand & Partner
Building physics: Dr. Pfeiler ZT GmbH
HVAC + Electrical Planning: Vasko & Partner ZT GmbH
Landscape architecture: Idealice – Technisches Büro für Landschaftsplanung
Location: Aspernstraße 3-5, Contiweg 5, 1220 Wien
Area: 20.000 m²
Photographer: Peter Burgstaller (Copyright: Atelier Heiss)

Students of Aspernstrasse are greeted by lentiform shapes twining around the glass front of the building. The new school in Hirschstetten was designed as a structure with two horizontal accentuated emphasis wings with classrooms. The glass south-facing atrium with the library in a distinctive

loft conversion gives an architectural identity in an area with few other architectural landmarks. The »Contistreifen« serves as a backbone between the public front courtyard and the private area of the inner courtyard.

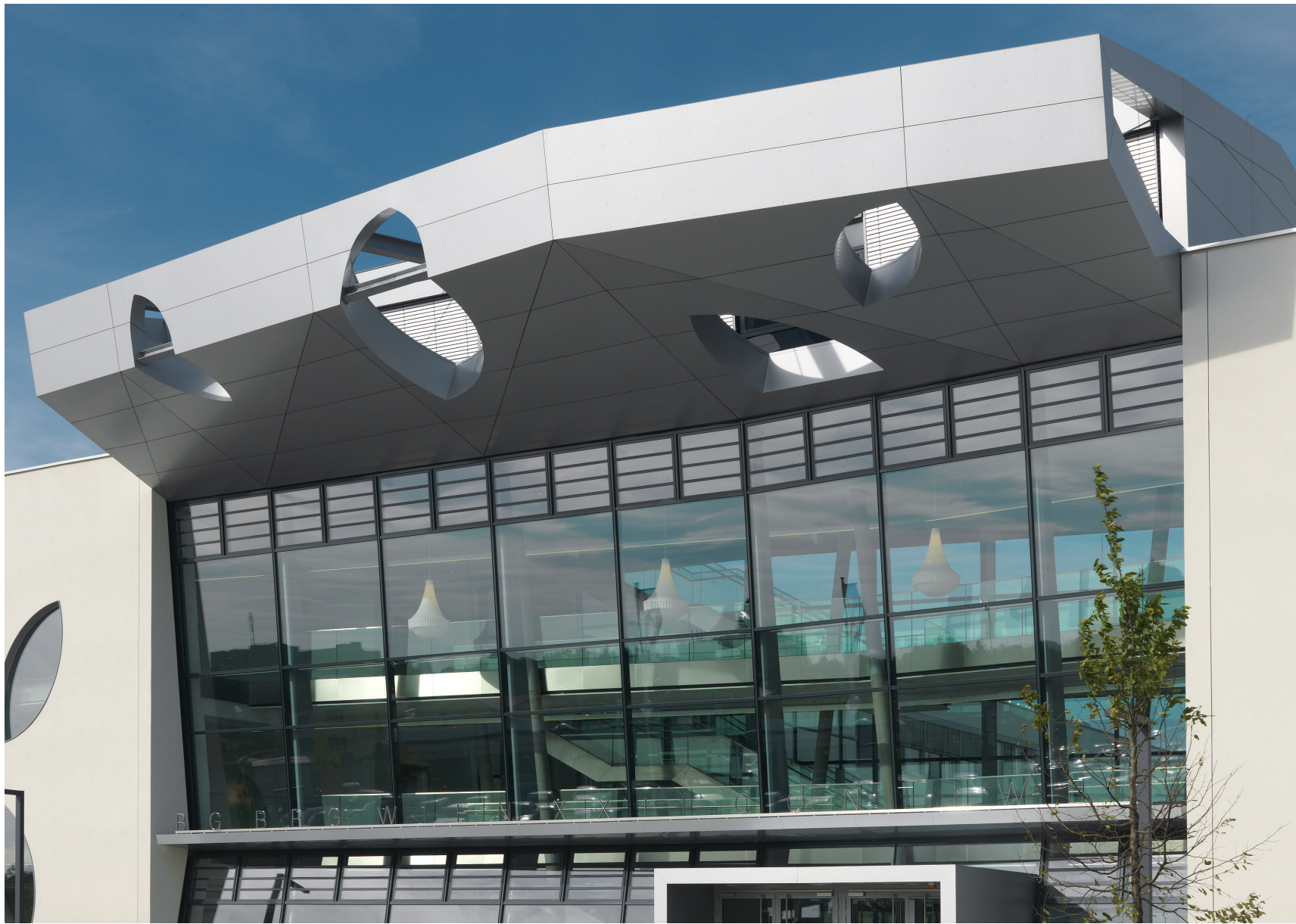


FRONT VIEW



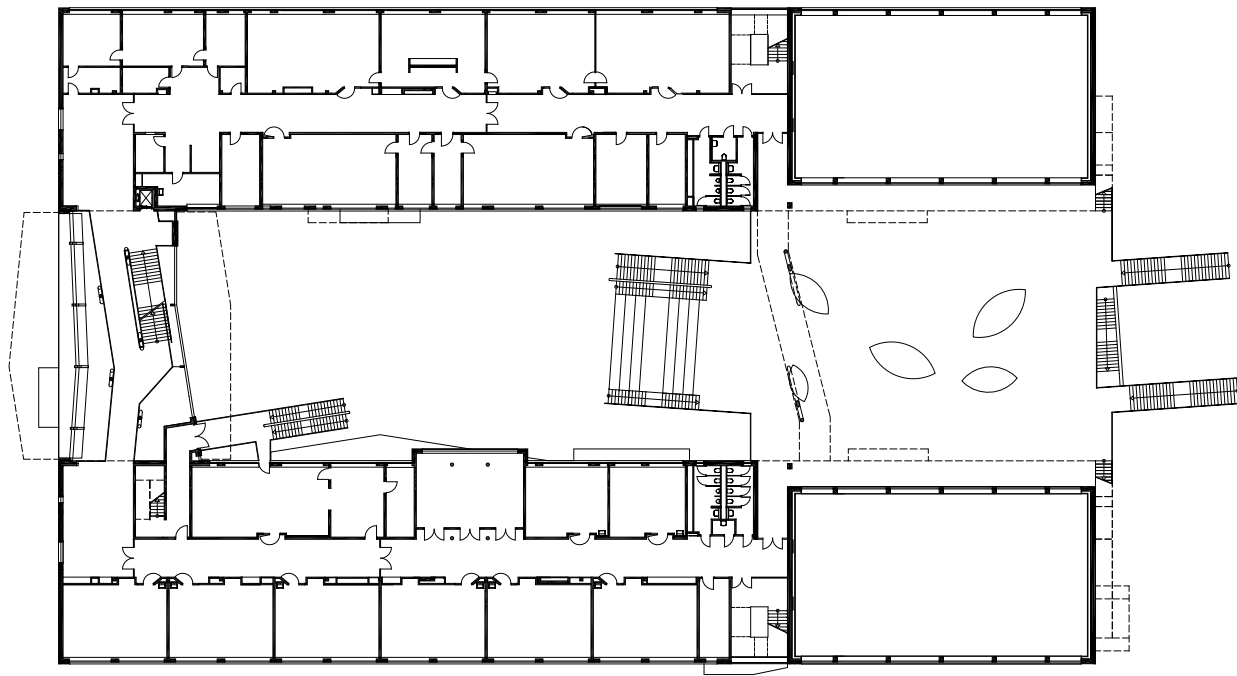
SECTION







该建筑的正面由玻璃打造而成，凹透镜般的形态仿佛向Aspernstrasse学院的学子们张开欢迎的臂膀。这座位于Hirschstetten的新学校是一幢两层高的小楼，其水平的构造突出地强调了两翼的教室区。面南的玻璃中庭是图书馆，顶层的阁楼特色十足，使该建筑与其他地标性的建筑与众不同，卓尔不群。该»Contistreifen«建筑是校园中的核心建筑，连接着公共的前厅和自用的后院。



GROUND FLOOR

