

Pent House

Kitzbühel

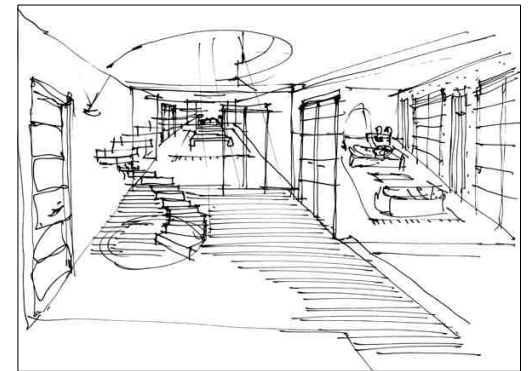
Design Atelier Heiss Architekten **Design team** Christian Heiss, Michael Thomas, Thomas Mayer, Severa Horner, Andrea Braun, Petra Kogler, Ferenc Tibbus, Adina Tomi **Location** Austria Kitzbühel **Built area** 240m²
Completion 2011 **Photos offer** Archiv Atelier Heiss



{ In a location in downtown Kitzbühel, a penthouse over two floors was built. An elaborate elliptical stair construction of painted iron with visible welding seams forms a contrast to the precious materials of the high-end furnishings. The highlight of the spacious master bedroom is a twelve meter long multi-functional piece of furniture which converts from a dressing table to a washstand to a handrail and finally, to a bookshelf. }

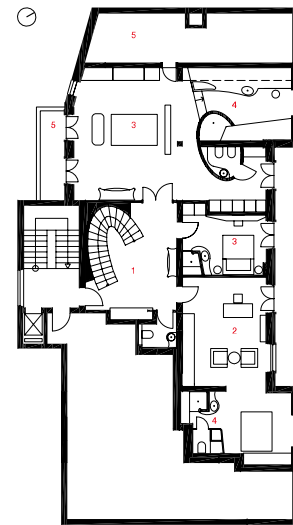
Tot by Atle Heiss Architekten

Atelier Heiss Architekten was founded in 1997 by Christian Heiss, are based in Vienna. Today, projects are developed by a staff of about 30, under the management of the three partners Christian Heiss, Michael Thomas and Thomas Mayer. Atelier Heiss Architekten implement individual and unique projects in the fields of architecture and interior design. In close cooperation with their clients, they develop custom-made solutions with the highest standards of architecture.





- 1 HALL
- 2 LIVING ROOM
- 3 BEDROOM
- 4 BATHROOM
- 5 BALCONY



FLOOR PLAN

