

DANIEL, VIENNA ATELIER HEISS

Although the official decision to list the aluminium-framed façade and original stairway of this early sixties office block was made during the design phase of the project, the architects were already committed to preserving both. A new escape stair provides the necessary escape route and structural bracing.

The dimensions of the existing structural and cladding grids presented problems in the planning of bedroom floors. The four window bays between columns were too many, given the depth of the plan, to devote to one bedroom, and a plan two-bays wide did not give the length necessary to accommodate a bed. The solution was to crank every second dividing wall to provide rooms on both sides with extra length at the bed location. On one side of each cranked partition the bed is closer to the view; on the other it is the shower and washstand. Bedrooms on the ends of the building can accommodate the bed without the crank since the columns, which otherwise determine partition centres, sit in from the external wall. The two bedrooms that surround the new stairwell, located within the full width of a structural bay, each have an external wall of four window bays with a centralized column that helps demarcate the bed space.

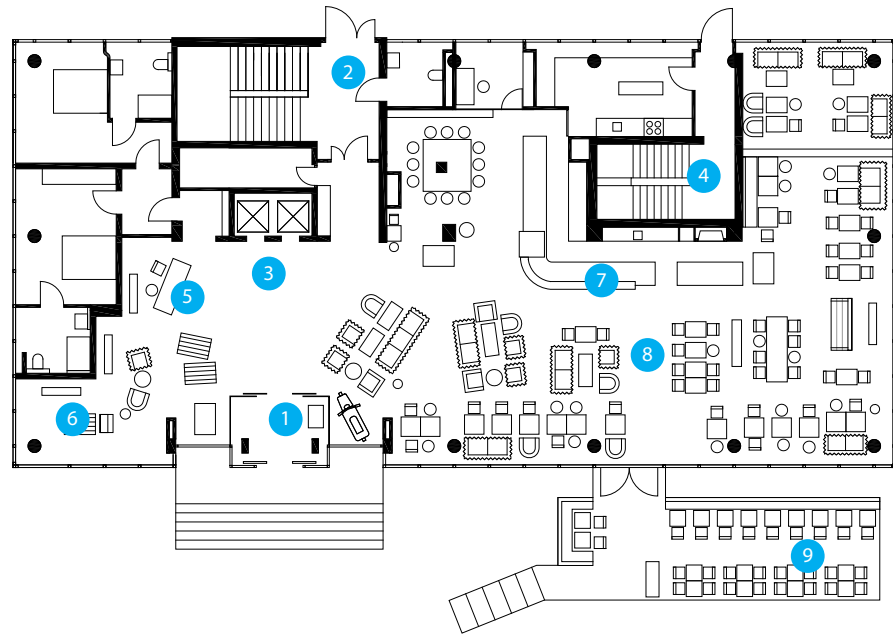
The recess formed for the bedhead in cranked walls is lined with walnut-veneered plywood and this device is also used as a free-standing element against straight walls. Otherwise the rooms are kept simple. Apart from the frameless glass shower enclosure, they are reduced to essentials, which include a television set but exclude wardrobes and mini-bars. The concrete soffit of the floor slab above is left as found, with visible evidence of old partitions and fixings. Light shades are familiar industrial fittings and cables, which carry power from within the new partitions and hang from ceiling hooks with redundant lengths casually gathered in tied loops.

The reductive aesthetic for the bedrooms is introduced at entrance level, where a casual mix of reception, various sitting areas and a shop, all beneath a ceiling festooned with services and lighting gantries, clearly signal and encourage a rejection of familiar corporate formalities.

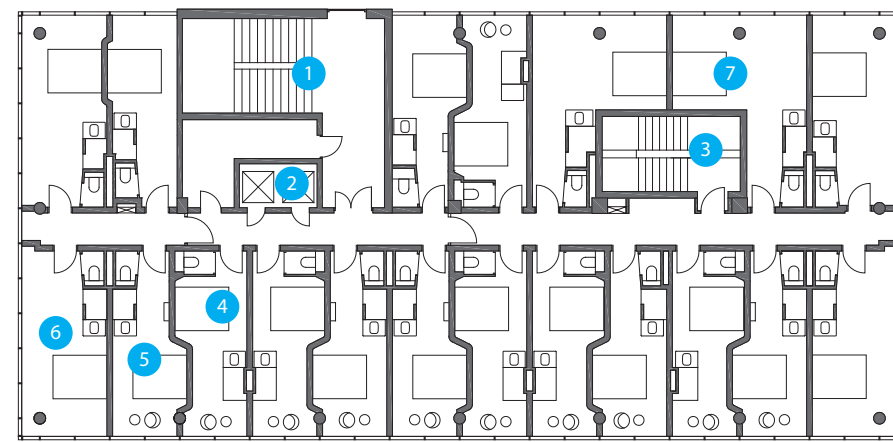
RIGHT

The recess in the cranked wall allows for circulation space at the foot of the bed. The walnut-veneered plywood panel, the upholstered bedhead and trio of lights provide the only gestures toward conventional hotel bedroom decoration.

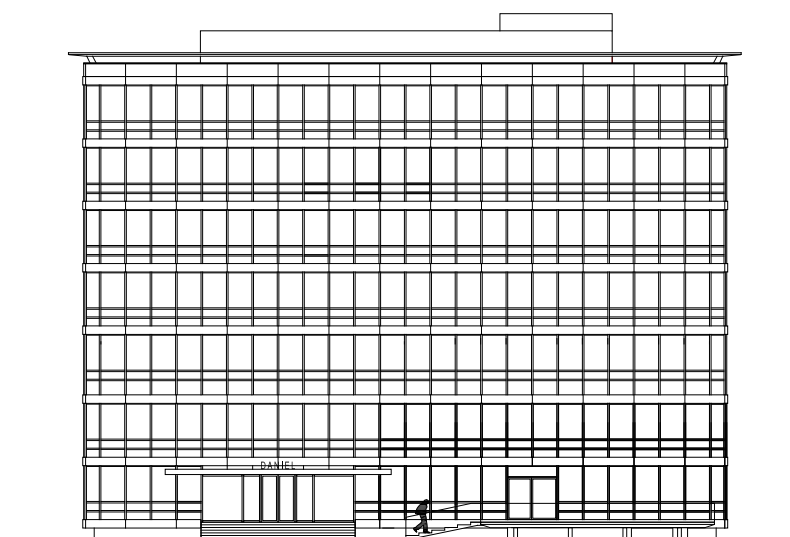




PLAN, SCALE 1:250



PLAN, SCALE 1:250



ELEVATION, SCALE 1:330

TOP

Ground-floor plan

- 1 Entrance
- 2 Existing stair
- 3 Lifts
- 4 New stair
- 5 Reception
- 6 Shop
- 7 Servery
- 8 Lounge/café
- 9 Outdoor terrace

MIDDLE

Bedroom-floor plan

- 1 Existing stair
- 2 Lifts
- 3 New stair
- 4 Bedroom type 1
- 5 Bedroom type 2
- 6 Bedroom type 3
- 7 Bedroom type 4

BOTTOM

Façade elevation



TOP

The entrance features new oak flooring and a shuttered concrete ceiling. The reception desk is a recycled shop-display unit and the shop to its left displays products on stacked wooden pallets and miscellaneous found objects.

BOTTOM

The ceiling is painted white above the sitting areas but the random deployment of pipes, the exposed end of a truncated wall and a medley of furniture pieces reinforce the sense of the reinterpretation.





TOP
Bedrooms on the end walls have windows on two sides. The free-standing walnut panel remains but the shower now borrows natural light. Fabric hung from existing ceiling fixings provides a seating option.

BOTTOM LEFT
The glazed shower enclosure, raised to accommodate drainage, allows natural light to penetrate the depth of the room. The basin is open to the room, with the WC in a separate cubicle.

BOTTOM RIGHT
Bedroom plans
1 Entrance
2 Bed
3 Basin
4 Shower
5 WC
6 Flatscreen television
7 Column

OPPOSITE
A free-standing walnut-veneered panel defines the bed position in rooms next to the new stairwell.

